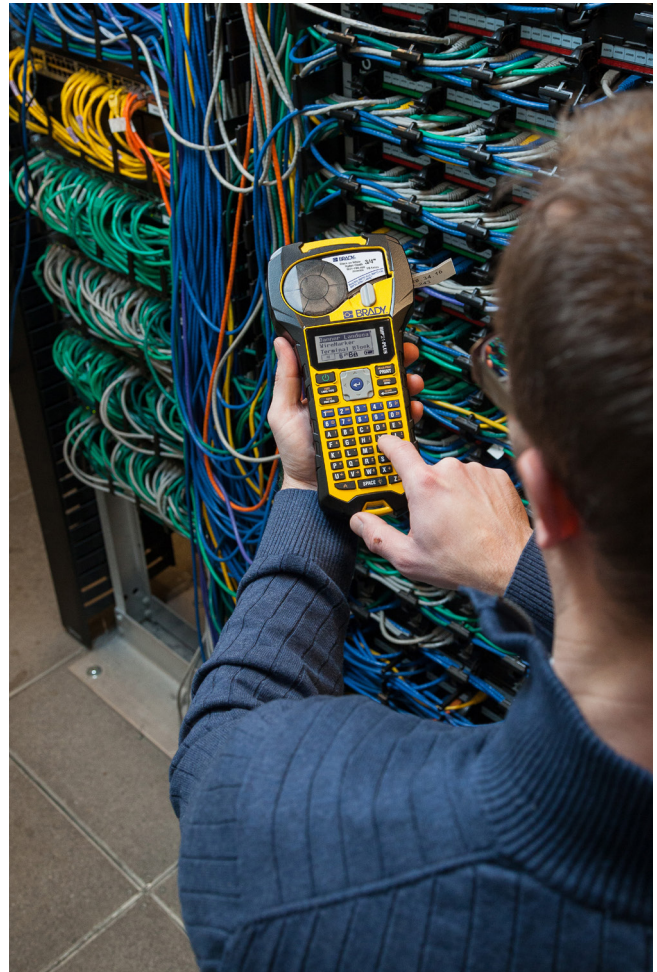


Printer Specifications

Language Support	Croatian, Czech, Danish, Dutch, English, Estonian, Finnish, French, German, Hungarian, Italian, Norwegian (Bokmål), Polish, Portuguese, Romanian, Slovak, Slovenian, Spanish, Swedish, Turkish
Software Compatibility	–
Bar Code Type	Code 39 and 128. Datamatrix and QR Code
Recommended Usage per Day	75
Built-in Symbols	215 symbols included
Colour Capability	Monocolour
Stand-alone Printing (Detached from PC)	Stand-alone
Connectivity Options	–
Internal Memory Capacity	None
Print Speed (mm/sec)	10
Print Technology	Thermal Transfer
Print Resolution (dpi)	203
Smart Cell	Yes
Text Sizes (pt)	6 - 40 pt
Serialisation	Simple & Single Advanced
Max. Label Width (mm)	19.00 mm
Max. Print Width (mm)	16.00 mm
Materials Supported	60+ standard parts: continuous tapes
Label Dimensions	Continuous: Width: 6.35, 9.53, 12.70, 19.05 mm; Length: 2.10, 4.30, 4.90, 6.40 metre
Label Colours	Black on White, Black on Yellow, Black on Clear, White on Blue, White on Green, Black on Orange, White on Red, White on Purple, White on Brown, White on Clear, Black on Grey, White on Black
Keyboard Type	ABC
Display	Monocolour LCD Screen
Cutter	Manual cut With label retention
Power Supply	6 AA Batteries Rechargeable Battery AC Adaptor
Length x Width (mm) x Height	235 mm x 125 mm x 50 mm
Weight (kg)	0.75 kg



BMP21-PLUS accessories

Art. No.	Description
110416	AC Adaptor - Europe 220V
110417	AC Adaptor - UK 240V
110937	AC Adaptor - US 110V
139542	Hard Case for BMP21; BMP21-PLUS; BMP21-LAB
139540	Li-ion battery Pack for BMP21-PLUS; BMP21-LAB
110891	Magnet Only Accessory
110892	Multifunctional Accessory



Magnet & multi-function tools

Heavy-duty magnet affixes printer to metal surface for hands-free printing. Multifunction tool has the magnet plus a flashlight and retractable printer stand.

Li-ion battery & power supply

Rechargeable for long life - print hundreds and hundreds of labels on a single charge.

Power supply serves as battery charger and adapter to run printer from power outlet.

Hard case

Durable and foam-lined for printer protection and easy storage. Holds printer and 4 cartridges with space for charger or more cartridges.



The breaker box labelling feature allows you to create effortless and clear identification for your distribution box, even when there are multiple modules of various widths.

- Rugged industrial bumpers with a grab and go grip to be on the move with you
- Simple all-in-one, drop-in cartridges for quick and easy supply change and automatic label setup
- Wide range of materials so you can print all your jobs on one printer

